

Science





About us

Do you have a sharp, analytical mind and a passion for science? Are you looking for a rewarding job where you can make a real difference in the world? Whether you want to save lives, fight climate change, get involved in green and environmental science or make ground-breaking discoveries, a science qualification is your first step.

You'll find scientists in almost every industry across the globe, so taking a science course can open the door to a huge variety of careers, from forensic scientist and biochemist to paramedic, midwife and pharmacist.

And those opportunities are only expected to grow, as jobs in the scientific and technical industries are set to increase astronomically over the next few years.

If you have the passion to make a difference, we can help you gain the skills you'll use throughout your career.

You can gain those skills through our science qualifications which include BTEC Level 1, 2 or 3 in Applied Science, a T Level in Laboratory Sciences, or, if you don't quite have the qualifications required for a T Level, you can develop your knowledge on our Level 2 T Level Foundation Year in Science and progress onto our T Level programme the following year.

Whichever route you choose, you'll be mastering those skills in well-equipped laboratories, led by tutors who are experts in their fields. And you won't always be taught on campus, as you'll get to enjoy field trips, attend industry lectures and gain experience out in workplaces.

So, what are you waiting for?





If you've achieved the necessary entry requirements prior to joining us, or during your time in our Centre of Excellence, you may be able to progress into our Industry Excellence Academy for Science and study a T Level or T Level Foundation Year which have been co-developed with industry partners.

Working so closely with employers means you'll benefit from courses that are aligned with current industry skills demands as well as a range of industry-level activities and lessons.

This will include masterclasses and lessons delivered by scientific experts, visits from guest speakers at the forefront of the industry and being tasked with 'live briefs' that will see you working on the kind of projects you'd be completing once you begin your career in science.

Once you complete your journey in our Industry Excellence Academy for Science you will have the qualifications you need to take the next steps towards an amazing career as well as the experience and skills that will help you stand out to future employers.



Study for a Technical Level (T Level) qualification in Science

T Levels are a new two year technical programme that provide you with a high-quality alternative to A Levels.

They have been developed in collaboration with employers and combine theory, practical and classroom learning with a minimum 45 day industry placement. If you opt to take a T Level you will spend 20% of your time on an industry placement and 80% in the classroom.

After completing the course you can progress directly into work, on to a Higher Apprenticeship or even go on to study a university degree, as T Levels are awarded UCAS points.

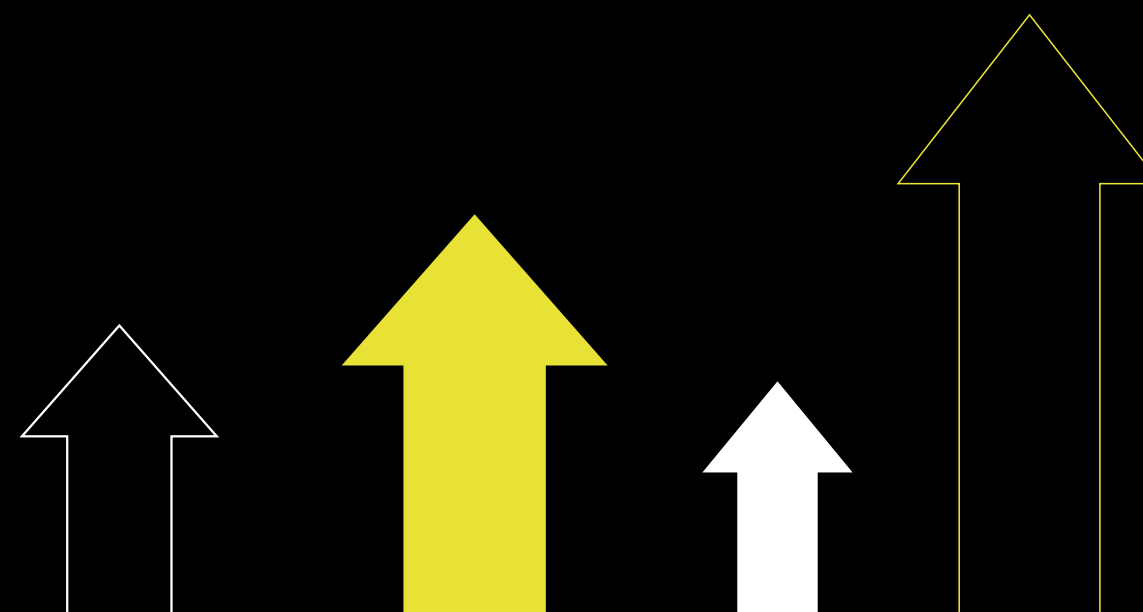


T Award

Those successful in gaining a place on a T Level will be eligible for the 'T Award', a package of benefits that includes

- £300 per year bursary*
- Access to industry standard laptop* (as appropriate)
- Opportunity to take part in exciting college-wide competitions
- Minimum 20% delivery by industry experts
- Minimum 45-day industry placement
- Free branded work wear
- Masterclasses
- Digital upskilling
- Bursary incentive if progressing to UCEN Manchester
- Guaranteed progression to a Higher Education course at UCEN Manchester
- Use of industry based software
- And much more.

**Subject to requirements including 95% attendance, positive attitude and grade profile.*



Courses

Level 3 | T Level | Science (Laboratory Sciences)
In partnership with The University of Manchester
Shena Simon* | Two Years

If you want to follow a career in clinical and research roles in the science sector then our two-year T Level in Science (Laboratory Sciences) is for you.

During this qualification you'll start by developing an understanding of working within the health and science sector. You'll learn about the principles of good scientific and clinical practice as well as core science concepts including the structure of cells, tissues and large molecules, genetics, microbiology and immunology.

You'll go on to develop your knowledge of topics within biology, chemistry and physics such as cell cycle and cellular respiration, enzyme and protein structure, kinetic changes and much more.

You'll then have the opportunity to put everything you have learnt into practice during your industry placement ahead of your future career in science.

For those who don't meet the entry requirements and would still like to pursue a T Level there is the option of a one-year Level 2 T Level Foundation Year as part of our Industry Excellence Academy for Science.

Level 2 | T Level Foundation Year | Science
Shena Simon* | One Year

This Foundation Year will allow you to gain a qualification and move on to study one of our T Levels the following year.

In the classroom you'll further your knowledge of each core science (biology, chemistry and physics) in preparation for transitioning onto the T Level. Meanwhile, in our labs and on your industry placement, you'll experience what it's like working in the science sector before progressing onto our T Level.

Jump Start to T Levels

Both our T Level and T Level Foundation Year require you to complete our Jump Start to T Levels programme as an entry requirement.

This programme is a two-week introduction to our Industry Excellence Academy, T Level and Foundation Year programmes, where you can meet your tutors and experience what studying a T Level at The Manchester College is like.

To apply or find out more about our T Levels and T Level Foundation Year programmes, visit our Industry Excellence Academy website:
industry-excellence.tmc.ac.uk/t-levels



**Please note in September 2025 we will open brand new facilities for our Industry Excellence Academy for Science in a new four story building next door to City Campus Manchester. If you are on a two-year T Level programme or choose to progress to a T Level after successfully completing the Foundation Year you will move from Shena Simon to these new facilities for your second year of study.*

We passionately believe in helping you reach your ultimate goal, focusing on your future employability and developing the skills you need to have a successful career.

If you're aged 16-18, our Centre of Excellence for Science is set up to help you do just that!

Study Programme

You'll join our Centre of Excellence for Science when you enrol on one of our Applied Science qualifications. If you haven't already obtained a Grade 4 GCSE in English, you'll study to achieve this level of qualification alongside your course. This is a mandatory requirement and it's also essential you achieve this for many careers. A Grade 4 in maths is a requirement for Level 3 Applied Science.

Employability

To prepare you for your future career, you'll take part in a range of 'employability' activities to equip you with the knowledge and experience of careers available to you.



Employability Sessions

You'll be assigned an Employability Tutor and will take part in dedicated 'employability' sessions which will help equip you with the skills you'll need to thrive in the workplace.

Work Experience Placement

If you join our Centre of Excellence you'll spend a minimum of 35 hours working in external workplaces across the region, while if you join our Industry Excellence Academy you'll complete at least 105 hours of work experience.

During your work experience you'll assist with day-to-day tasks and shadow staff to develop your skills and broaden your knowledge of the industry.

Some of our students spend 50 days or more gaining valuable experience with employers such as Robinsons Brewery, Urmston Aquatics and Everest Pharmacies.

Industry Placement

If you complete an industry placement with the University of Manchester as part of our Industry Excellence Academy then you'll gain 315 hours of work experience.

A placement gives you in-depth knowledge of the industry, allows you to gain hands-on experience and gives you an insight into career pathways.

With a placement, you're taking that all important first step onto the ladder; many of our students even go on to gain paid employment with their industry placement employer at the end of the year.

Work-Related Activity

You'll learn more about the industry through:

- Visits from professionals working in a variety of scientific roles in industries such as healthcare at the NHS and pharmaceuticals
- Trips to Jodrell Bank, Museum of Science and Industry and other activities with the University of Manchester
- Careers events and activities, such as the STEM Careers programme with GM Higher, enabling you to explore future routes into the industry, including university degree career paths and degree apprenticeship routes.



Courses

At The Manchester College, our science courses give you a solid grounding in scientific foundations and include plenty of practical lab work, so they'll help you to kick-start your journey towards a career in any one of a number of fascinating industries.

Level 1 | Applied Science

Shena Simon* | One Year

On this course you will learn about scientific principles and how to put them into practice in the workplace. You will develop a range of transferrable skills including communication, problem solving, managing information and working with others.

You will cover science topics such as investigating crime scene evidence, measuring waves used in technology and investigating variations in plants and animals.

Level 2 | Applied Science

Shena Simon* | One Year

On our Level 2 Applied Science course, you'll be exploring a wide range of scientific theories in areas such as medicine, forensic science, industry and process sectors.

You'll learn all about the scientific principles and spend plenty of time in the lab putting those principles into practice. You'll develop the vital analytical skills you'll need if you're to succeed both here at the College and throughout your career.

Level 3 | Applied Science

Shena Simon* | Two Years

Whether you're planning to move onto a degree-level course after your time with us or head straight out into the workplace, this Level 3 course can help you to achieve your goals. You'll delve even further into the fields of chemistry, biology and physics and see how they're applied in real-life scenarios.

We'll help you to perfect your laboratory techniques. You'll also start to get a better idea of which career path is right for you by undertaking specialised units such as Practical Chemical Analysis and Diseases and Infections.

**Please note in September 2025 we will open brand new facilities for our Industry Excellence Academy for Science in a new four story building next door to City Campus Manchester. If you are on a two-year programme or choose to progress with us you will move from Shena Simon to these new facilities for your second year of study.*

SUPPORTED LEARNING

Promoting independence
through accessibility and
inclusion

Have you received learning support in the past? Do you have an Education, Health and Care Plan or an identified Special Educational Needs or Disabilities (SEND) need? Our Supported Learning team can help students with SEND to achieve their aspirational career goals.

We provide a highly personalised offer for students to create a supportive learning environment for all. Whatever course you choose to study, our provision is specifically designed to support you on your journey to independence and into further education or employment.

Find out more about how we can help you:
tmc.ac.uk/supported-learning



We'll help you Accelerate2industry

As soon as you enrol on a Science course, we'll start talking to you about the opportunities that could be open to you in the future.

To guide you through the process and help you achieve your aspirational career goals, we've teamed up with our higher education partner, UCEN Manchester, on an exciting initiative.



Ultimately, the aim of Accelerate2Industry is to help you progress into either higher study, higher education with UCEN Manchester, or your chosen career.

The initiative runs throughout the academic year and there are three distinct phases:

Step 1 - Plan >>>

Find out the options available to you at the end of your study programme.

Step 2 - Pass >>>

Your tutors will speak to you about what you're planning on doing next year and support you to secure the grades you need to move on to the next phase of your journey.

Step 3 - Progress >>>

Your tutors will ensure you have all of the information and support you need to re-join us in September or progress on to university, employment or an apprenticeship.

Progressors Award >>>

Do you want to study with a higher education provider that offers something a little bit different and delivers courses that are career focussed and lead you straight into employment? If so, our Progressors Award is just for you.

The award is open to all Level 3 students at The Manchester College that upon completion of their course enrol onto a higher education course at UCEN Manchester. The Progressors Award is currently £200. Please check the amount, eligibility, and terms and conditions ahead of making your progressors application to UCEN Manchester during your final year of Level 3 study.

DEGREE LEVEL

You can continue to learn in our state-of-the-art facilities for Science as you take your next steps into the Science Sector with a degree. You'll benefit from smaller, highly practical classes and award winning support.

Access to Higher Education

These are 1 year courses that are ideal if you need to top up your existing qualifications.

- **Combined Medical Science**
- **Social Science**

Foundation Degree

This is a two-year course, that allows you to progress onto a one-year (Top-up) degree to obtain an Honours degree.

- **Sport Science: Strength and Conditioning**

BSc Top Up

A 1 year course for level 5 qualified students to gain an Honours degree.

- **Applied Sport and Exercise Science.**

For more information or to apply
visit ucenmanchester.ac.uk



Careers



Biomedical Scientist

Starting salary: £25,600

Salary with experience: £93,700

As a biomedical scientist, you'd be helping to save lives and your work would be vital to many hospital departments, including operating theatres and A&E. You'd carry out a range of laboratory and scientific tests on tissue and fluid samples to help clinicians diagnose and treat diseases. You'd also be helping to evaluate the effectiveness of treatments, to make sure that patients receive tailored care and give them the best chance of survival.



Diagnostic Radiographer

Starting Salary: £25,600

Salary With Experience: £31,500

If you're interested in using the latest technology to help people who are ill or injured, diagnostic radiography could be the career for you.

As a diagnostic radiographer you'd use X-Ray and ultrasound machines, as well as other forms of imaging technology, to look inside a patient's body and find out what's causing their illness.

As your career progresses, you could also find yourself helping to interpret images, establish treatment plans and undertake intervention procedures, by removing kidney stones, for example.

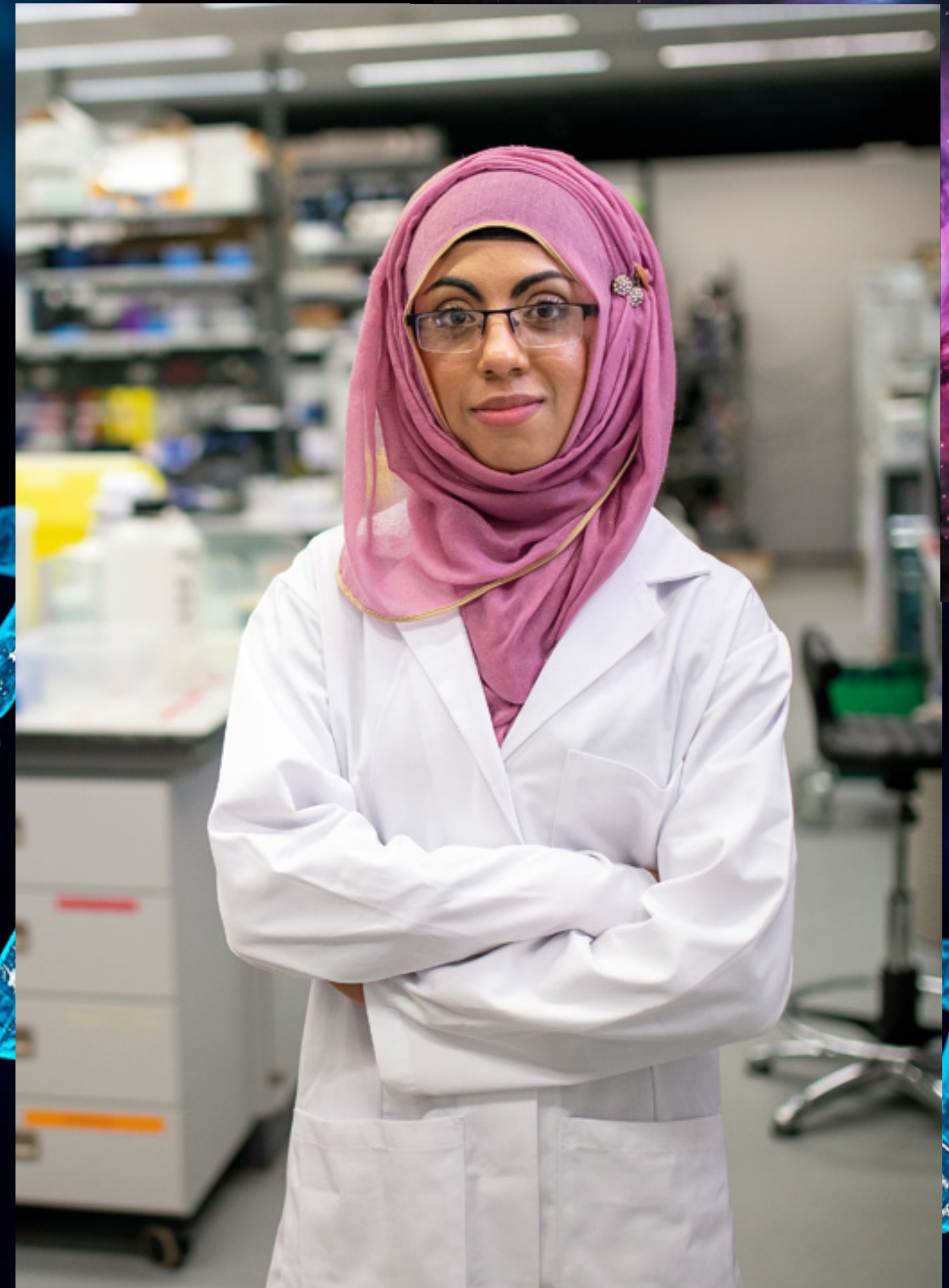


Laboratory Technician

Starting salary: £25,600

Salary with experience: £31,500

As a scientific laboratory technician, you'd be involved in a variety of laboratory-based investigations within biological, chemical, physical and life science areas. Your work could assist in the advancement and development of modern care professions and science, and play an important role in the foundation stages of research and development (R&D).



Meet the team

When you join The Manchester College as a science student, you'll be learning from tutors with a wealth of experience in their fields. You'll be able to discuss scientific principles with them, debate complex theories and learn about some of the recent advancements shaking up the science community.



Claire Prescott
Head of Department

Claire joined the College in December 2021 and has more than 10 years' experience teaching and managing Health and Social Care and Science departments in further education colleges and sixth forms. She possesses a degree in Chemistry from the University of Leeds, however, her special interest is in human biology and disease having spent nine years working in the pharmaceutical industry before entering teaching.



Sally Cooper
Department Team Leader

Sally joined the College in 2015 teaching in the Health and Social Care department and has more than 20 years' industry experience within hospitals and the community working with palliative care patients. Sally brings her experience into the classroom environment to add context to lessons. Sally has been one of the department Team Leaders since 2017 within the Health and Social Care department and is now embracing a new role in the Science department.



Nigel Paton
Science Technician

Nigel first joined the College in 1984 after working as a science technician in secondary schools around Stockport. He started working as the Physics Technician before gaining his HNC in Science with Laboratory Management, providing full technical support for students across chemistry, biology and physics. Nigel has over 41 years' extensive experience as a science technician in education, 39 years of which, he has spent working at The Manchester College.



Nusrat Ahmed
Tutor

Nusrat previously worked in a pharmacy dispensing and endorsing prescriptions as well as offering healthcare advice to customers. Nusrat's previous research work includes carrying out an independent investigation into the effect of the drug Mebeverine. The aim of the study was to discover the mechanism of action for the antispasmodic effect of the drug. Nusrat has taught both A Level Biology and Applied Sciences. Her primary interest is biology and she particularly enjoys teaching students about genetic engineering and human physiology.



Jabinda Silva Lobo
Tutor

Jabinda joined the Applied Science department in March 2023 with over 7 years' of industry experience. She has taught at the University of Mumbai and has expertise in medical microbiology and immunology. As a T Level Lead in Science, her goal is to provide the best experience to students, empowering them to carve their own identities and achieve remarkable success.



Our locations

The labs at our Shena Simon campus are a world away from the ones you'll have studied in at school.

Each one is dedicated to its own scientific area – biology, chemistry or physics - and together they have all the high-tech equipment you'll need to experiment, test theories and perfect your skills.

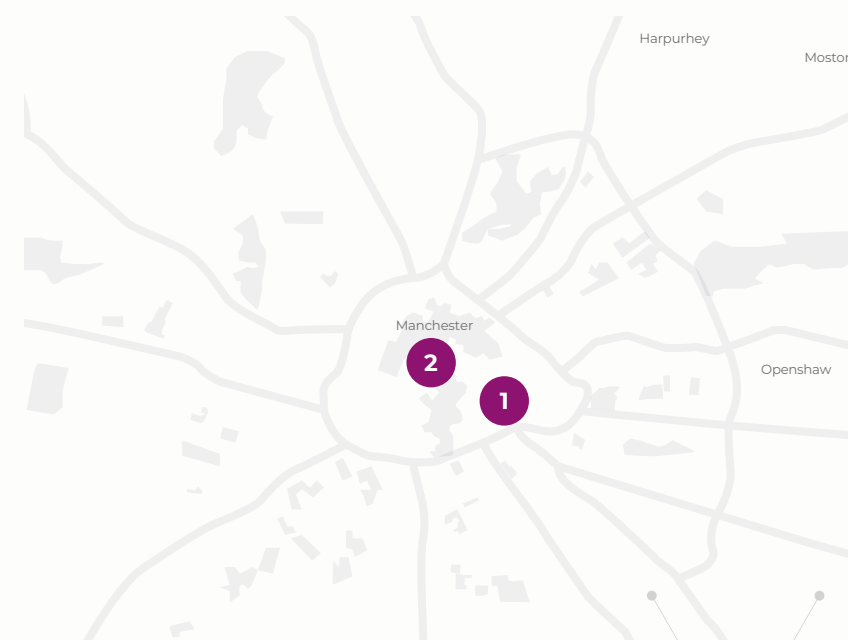
Outside the lab, you'll find the shops, cafés, and gardens of Manchester city centre within easy walking distance.

In September 2025 we will open brand new facilities for your course in a new four story building next door to City Campus Manchester.

The extended City Campus Manchester will include:

- state-of-the art science labs including three wet and one dry laboratory, fully equipped with everything you'd expect to see when you enter the world of work
- a Click Studio and repair lab run by students as part of their curriculum where you will be able to have your equipment repaired
- a roof terrace for socialising with friends
- an extended library
- plus IT suites and classrooms.

If you are on a two-year programme or choose to progress with us to study another Science course you will move from Shena Simon to these new facilities for your second year of study.



“

What our students say

I was attracted to The Manchester College after doing some research, I found that they offered the perfect course for me. When I was doing my research there were great student reviews and recommendations. The tutors helped me with my studies massively by always keeping in touch with me and helping me with my assignments. After I finish my studies with the College my goal is to go to university and study biomedical science.

Hamza Rahman, Level 3 Applied Science

Science has always been a big part of my life, especially medicine and so I decided I wanted to be an occupational therapist. The Manchester College is helping me to gain my Level 2 Science so I can progress into a Level 3 course and then hopefully onto university. I feel supported in the science department as the teachers offer a lot of support and guidance through our assignments. Everyone in the science department is really friendly and it makes it easy to fit in here.

Moss Gaughan, Level 2 Science (T Level Foundation Year)


”






How to apply


Applying to study at The Manchester College is really easy. Just follow these steps and you will be on your journey to amazing in no time.

- 


Step 1

Visit **tmc.ac.uk**
- 


Step 2

Choose a course, apply at an open event, online or mobile
- 


Step 3

Receive a conditional offer
- 

Step 4

Book to attend an interview
- 

Step 5

Register to attend our New Student Welcome Day in July (16-18 only)
- 

Step 6

We will invite you to enrol in September after you receive your results (if applicable)



What's Next?

Find out more and apply

To find out more about Science at The Manchester College and to apply scan the QR code or visit: **tmc.ac.uk/science**



Visit us

Join us at one of our open events throughout the year to learn more about our courses, tour our facilities, speak to our tutors and much more. To find out when our next Open Event is taking place and to register your place visit: **tmc.ac.uk/events**

Stay in touch

Follow us on our social media channels:

 **The Manchester College**

 **@TheMcrCollege**

 **@TheMcrCollege**

 **@themcrcollege**

Contact Us

Got a question about one of our courses, about The Manchester College or just need to get in touch? Contact us:

 **enquiries@tmc.ac.uk**

 **03333 222 444**



The Manchester College is committed to equality of opportunity, non-discriminatory practices and supporting individual learners. This information is also available in a range of formats, such as large print, on request.